



Technical Precautions for Design, Installation and Maintenance

34) External Connection Diagrams for Standard Motorized Pulleys

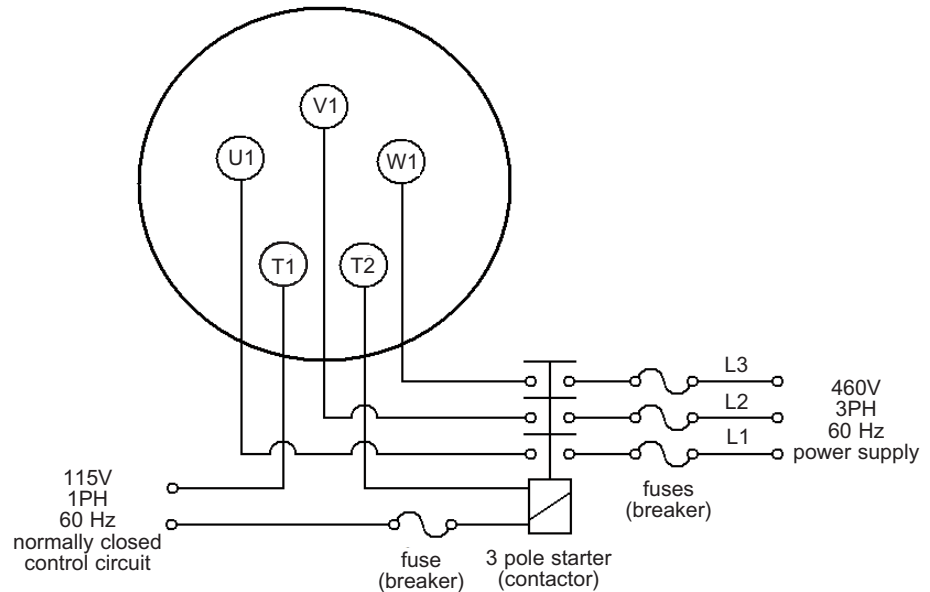
Standard Terminal Box 0.5 HP - 330 HP

Diagrams are valid for Motorized Pulleys manufactured after January 2011. For units built prior to this date contact Rulmeca or refer to Repair and Maintenance Guide available at www.rulmecacorp.com.

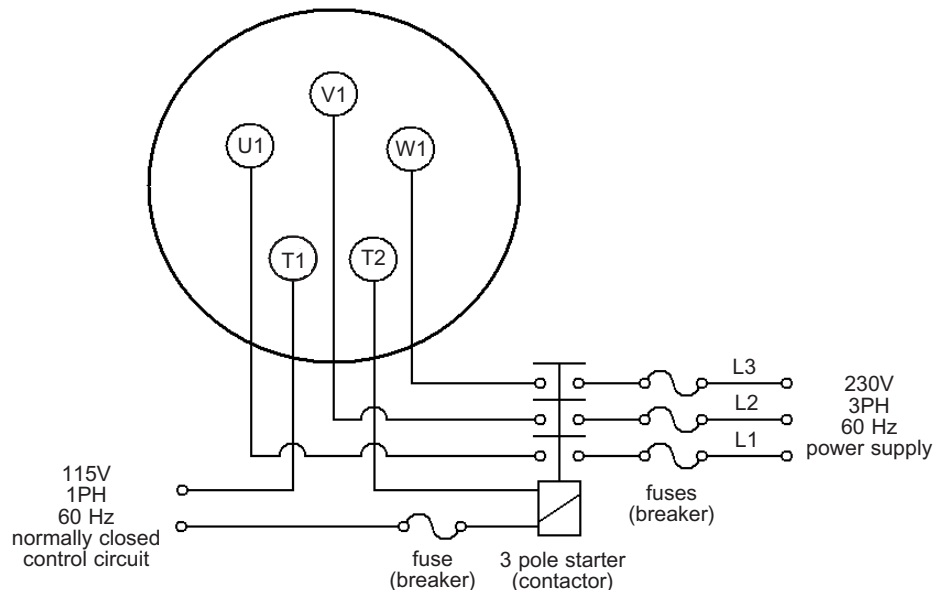
T1 & T2 = Internal bi-metallic thermal protection switch which **MUST BE CONNECTED** to external normally closed control circuit.

See Technical Precautions pages 78 - 88 for complete electrical design, installation, and maintenance instructions.

USA standard 460V power supply



USA standard 230V power supply





Technical Precautions for Design, Installation and Maintenance

34) External Connection

Diagrams for Standard Motorized Pulleys with Internal Brake

Standard Terminal Box 0.5 HP - 20 HP

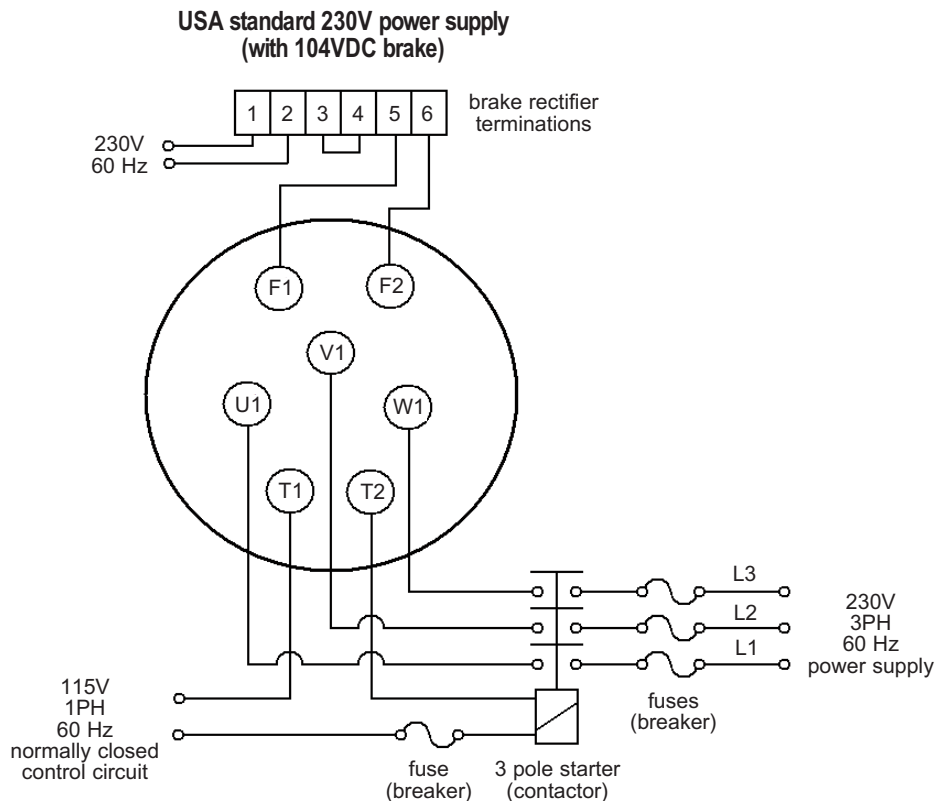
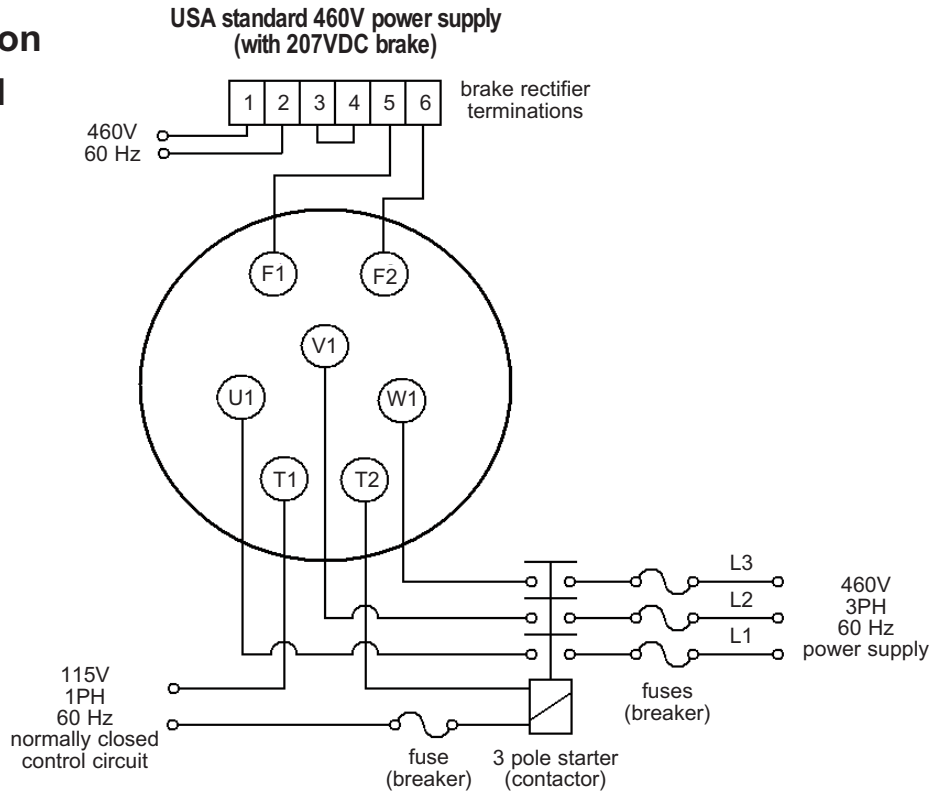
Diagrams are valid for Motorized Pulleys manufactured after January 2011. For units built prior to this date contact Rulmeca or refer to Repair and Maintenance Guide available at www.rulmecacorp.com.

T1 & T2 = Internal bi-metallic thermal protection switch which **MUST BE CONNECTED** to external normally closed control circuit.

See Technical Precautions pages 78 - 88 for complete electrical design, installation, and maintenance instructions.

Brake rectifier is shown with jumper across terminals 3 and 4. This enables AC power supply to rectifier to stop and start brake. Brake responsiveness may be improved by connecting an external switch to terminals 3 and 4.

Internal electromagnetic brake is available in models 220M - 500M.





Technical Precautions for Design, Installation and Maintenance

34) Connection Diagrams for Motorized Pulleys

**Model 138E - 400L in 3 phase
Power Cord
0.13 HP - 5.5 HP**

**Model 138E in 1 phase
Power Cord
0.13 HP - 0.75 HP**

Power cord wires are supplied with black insulation and white numbers. Wire numbers are indicated on the diagram.

T1 & T2 = Internal bi-metallic thermal protection switch which **MUST BE CONNECTED** to external normally closed control circuit.

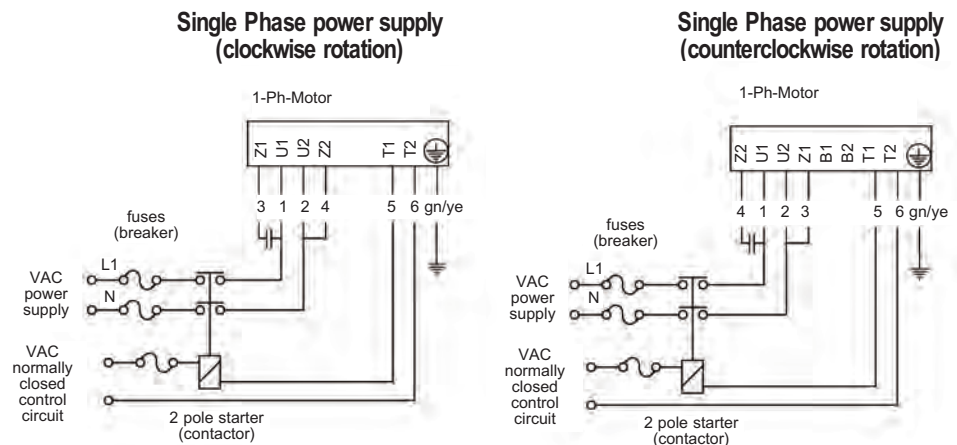
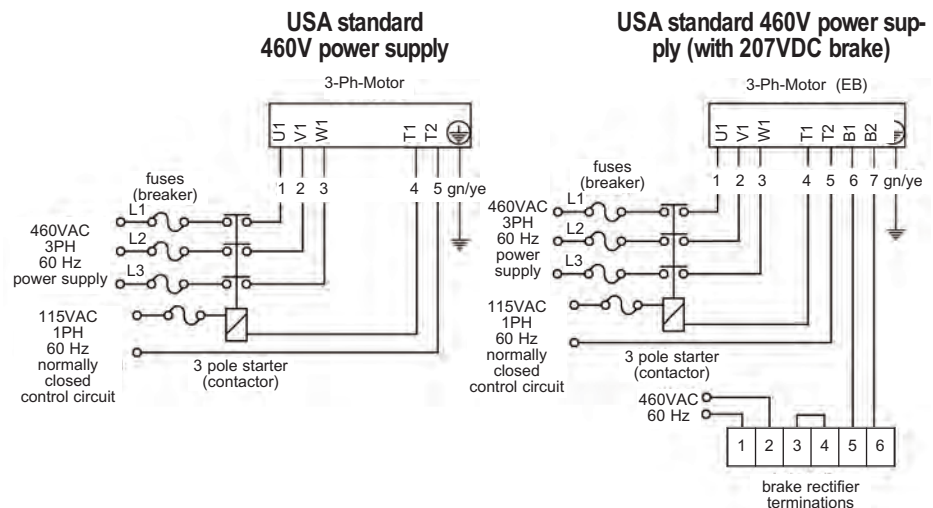
EB = electromagnetic brake

See Technical Precautions pages 78 - 88 for complete electrical design, installation, and maintenance instructions.

Brake rectifier is shown with jumper across terminals 3 and 4. This enables AC power supply to rectifier to stop and start brake. Brake responsiveness may be improved by connecting an external switch to terminals 3 and 4.

For two speed motor details contact Rulmecca.

Internal electromagnetic brake is available in models 138E - 500M.





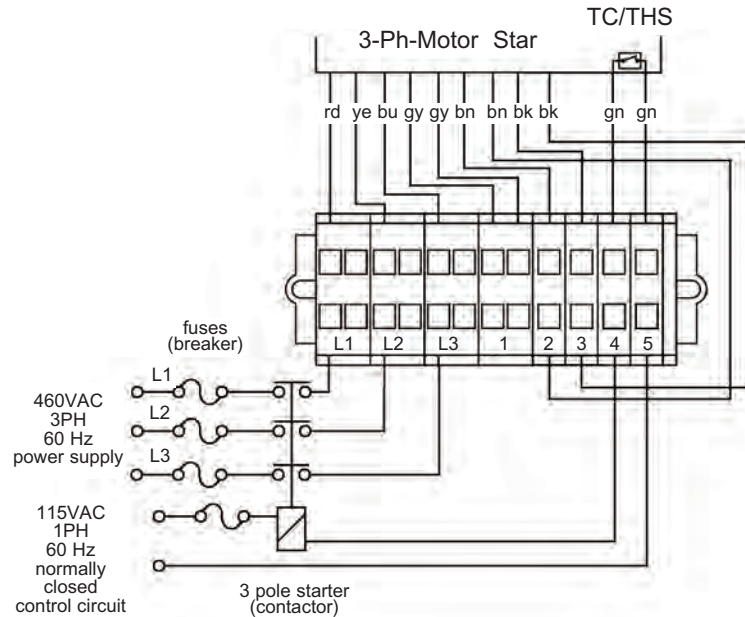
Technical Precautions for Design, Installation and Maintenance

34) Connection Diagrams for Motorized Pulleys

Model 138E in 3 phase Compact Terminal Box and WAGO-Clamp 0.13 HP - 1.0 HP

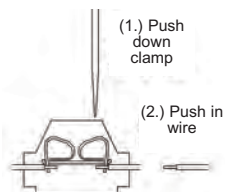
T1 & T2 = Internal bi-metallic thermal protection switch which **MUST BE CONNECTED** to external normally closed control circuit.

See Technical Precautions pages 78 - 88 for complete electrical design, installation, and maintenance instructions.

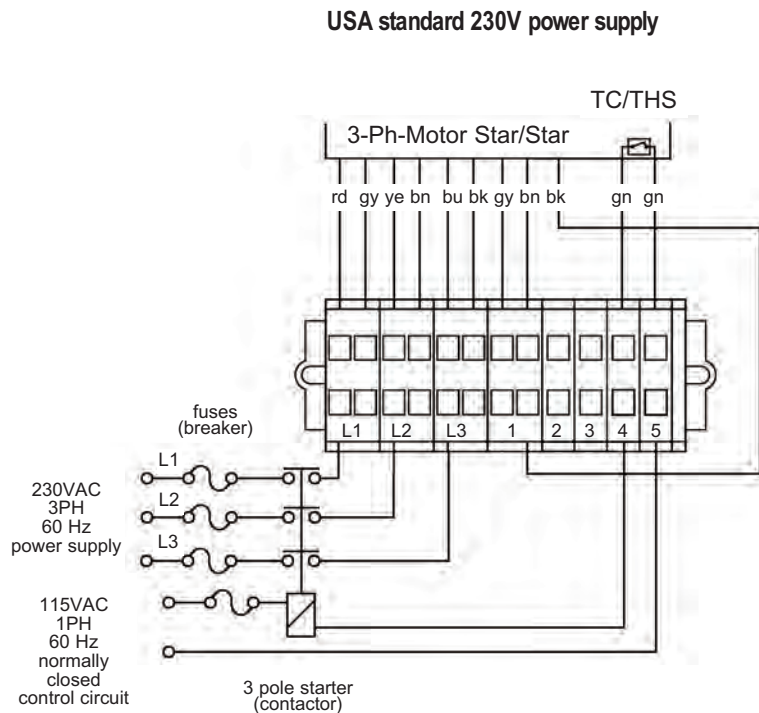


For two speed motor details contact Rulmecca.

RD = Red
YE = Yellow
BK = Black
GY = Grey
BU = Blue
GN = Green
BN = Brown
T1 & T2 = Thermal Protector



Assembly instructions





Technical Precautions for Design, Installation and Maintenance

34) Connection Diagrams for Motorized Pulleys

Model 138E in 1 phase Compact Terminal Box and WAGO-Clamp 0.13 HP - 0.75 HP

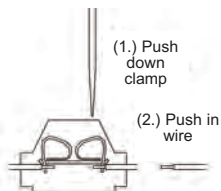
Diagrams are valid for Motorized Pulleys manufactured after January 2011. For units built prior to this date contact Rulmecca or refer to Repair and Maintenance Guide available at www.rulmecacorp.com.

T1 & T2 = Internal bi-metallic thermal protection switch which **MUST BE CONNECTED** to external normally closed control circuit.

See Technical Precautions pages 78 - 88 for complete electrical design, installation, and maintenance instructions.

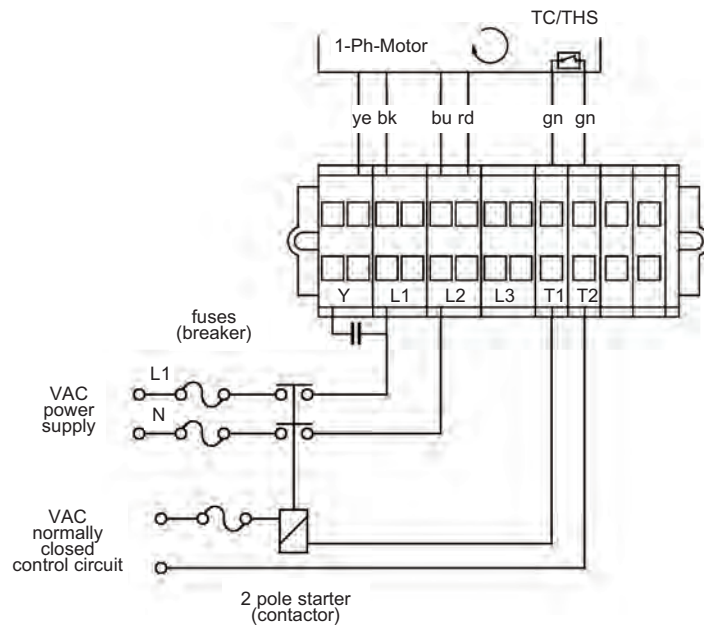
For two speed motor details contact Rulmecca.

RD = Red
YE = Yellow
BK = Black
GY = Grey
BU = Blue
GN = Green
BN = Brown
T1 & T2 = Thermal Protector

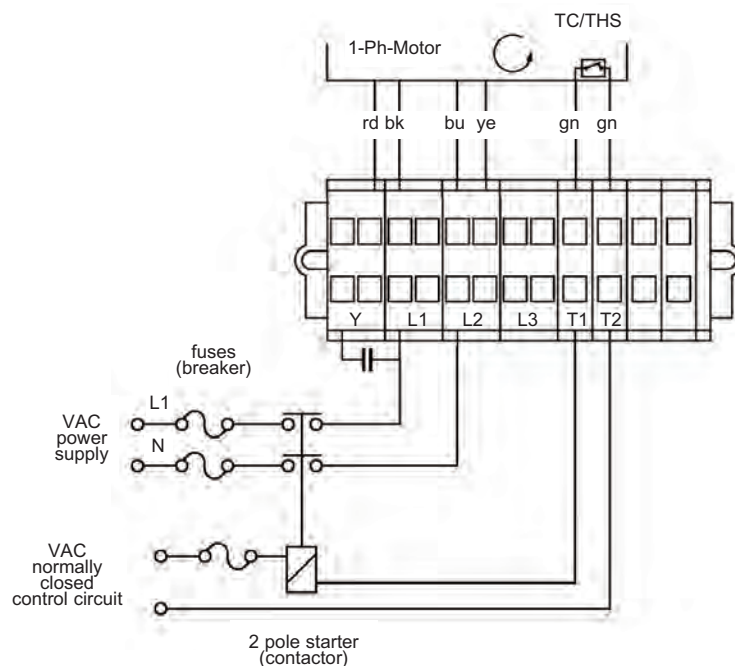


Assembly instructions

Single Phase power supply (clockwise rotation)



Single Phase power supply (counterclockwise rotation)





Technical Precautions for Design, Installation and Maintenance

34) External Connection Diagrams for Standard Motorized Pulleys with and without Internal Brake

Standard Terminal Box w/o brake 0.5 HP - 330 HP

Standard Terminal Box with brake 0.5 HP - 20 HP

Diagrams are valid for Motorized Pulleys manufactured after January 2011. For units built prior to this date contact Rulmeca or refer to Repair and Maintenance Guide available at www.rulmecacorp.com.

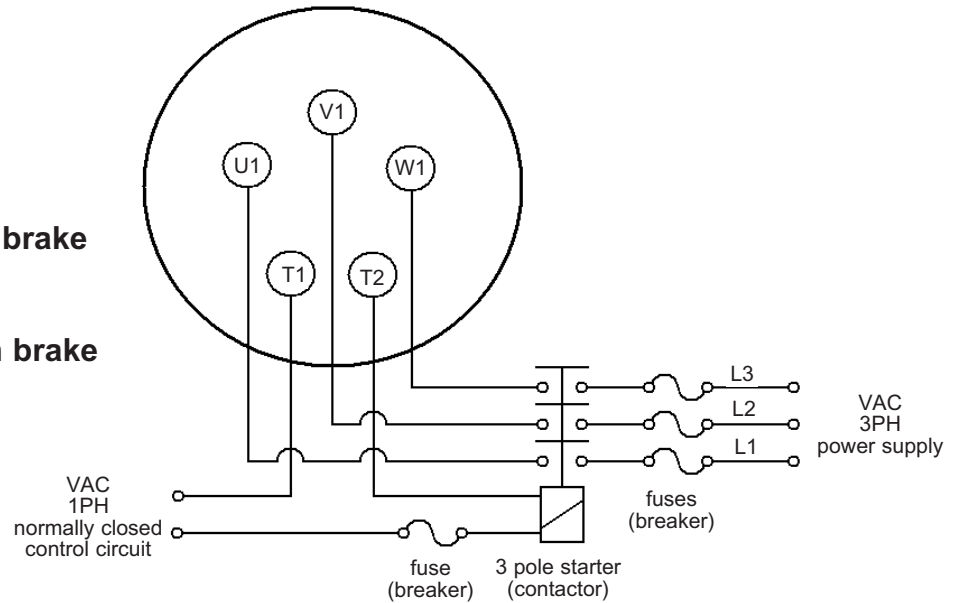
T1 & T2 = Internal bi-metallic thermal protection switch which **MUST BE CONNECTED** to external normally closed control circuit.

See Technical Precautions pages 78 - 88 for complete electrical design, installation, and maintenance instructions.

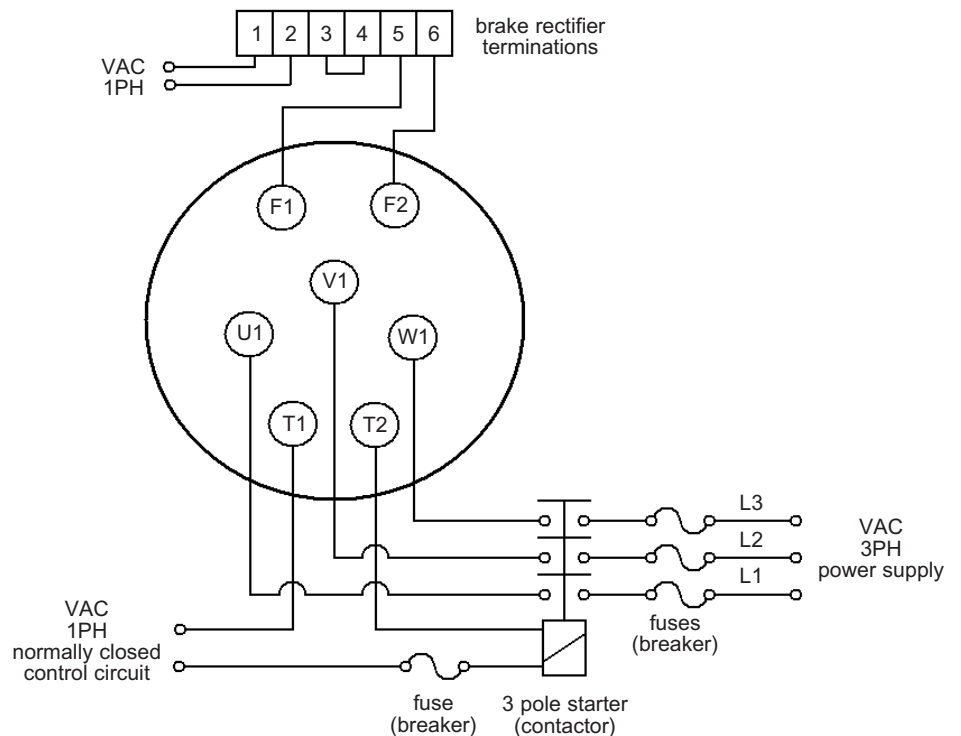
Brake rectifier is shown with jumper across terminals 3 and 4. This enables AC power supply to rectifier to stop and start brake. Brake responsiveness may be improved by connecting an external switch to terminals 3 and 4.

Internal electromagnetic brake is available in models 220M - 500M.

Non-USA power supply without brake



Non-USA power supply with brake





Technical Precautions for Design, Installation and Maintenance

34) External Connection Diagram for Standard Motorized Pulleys 500H - 1000HD with Inter- nal Anti-condensation Heating Element

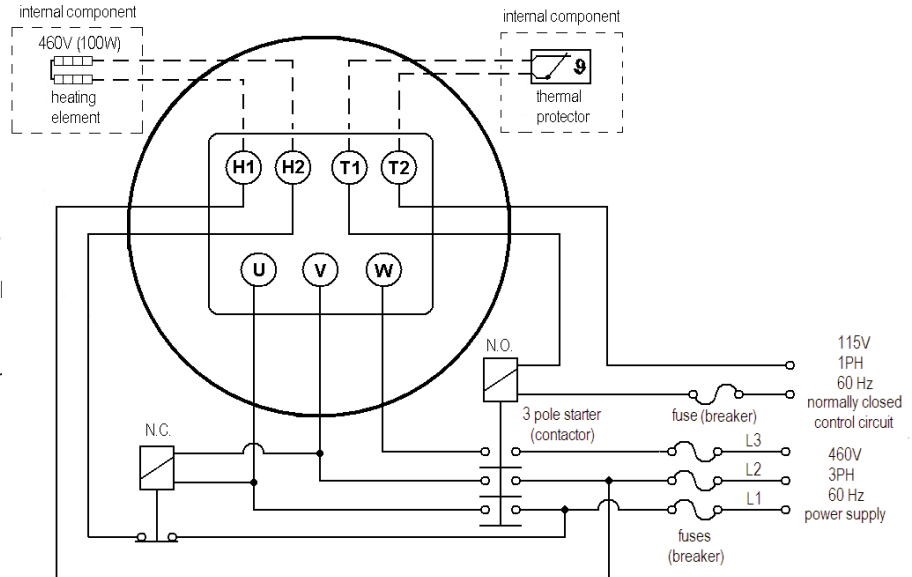
USA standard 460V power supply

Diagrams are valid for Motorized Pulleys manufactured after January 2004. For units built prior to this date contact Rulmeca or refer to Repair and Maintenance Guide available at www.rulmecacorp.com.

Terminals H1 & H2 for the anti-condensation heating element are live during Motorized Pulley stoppage.

Terminals T1 & T2 for thermal protection switch which **MUST BE CONNECTED** to external normally closed control circuit.

See Technical Precautions pages 78 - 88 for complete electrical design, installation, and maintenance instructions.



Anti-condensation heating element must be connected in such a way that it is turned off during motor operation.

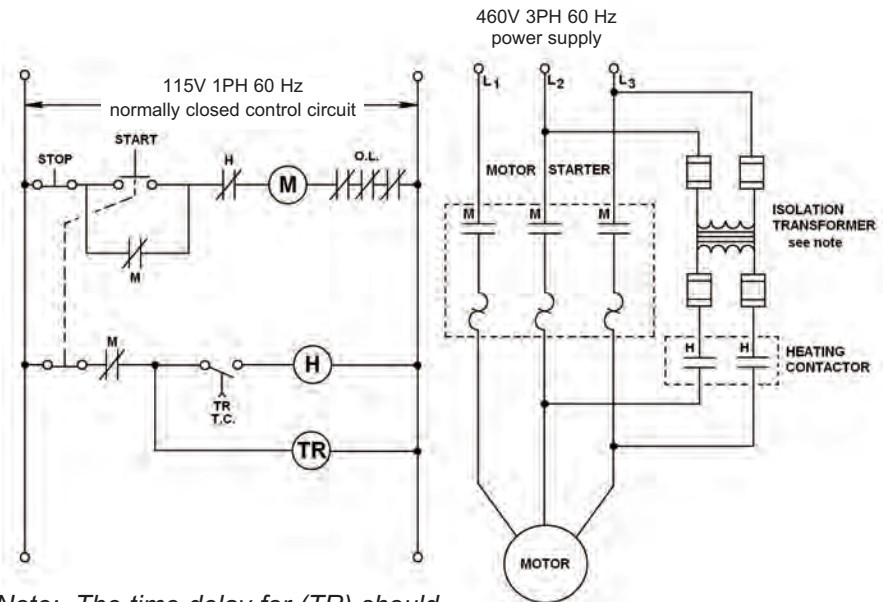
34) External Connection Diagram for Standard Motorized Pulleys 500H - 1000HD with Trickle Voltage Heating

USA standard 460V power supply

Diagrams are valid for Motorized Pulleys manufactured after January 2004. For units built prior to this date contact Rulmeca or refer to Repair and Maintenance Guide available at www.rulmecacorp.com.

T1 & T2 = Internal bi-metallic thermal protection switch which **MUST BE CONNECTED** to external normally closed control circuit.

See Technical Precautions pages 78 - 88 for complete electrical design, installation, and maintenance instructions.



Note: The time delay for (TR) should be between 10 and 180 seconds.